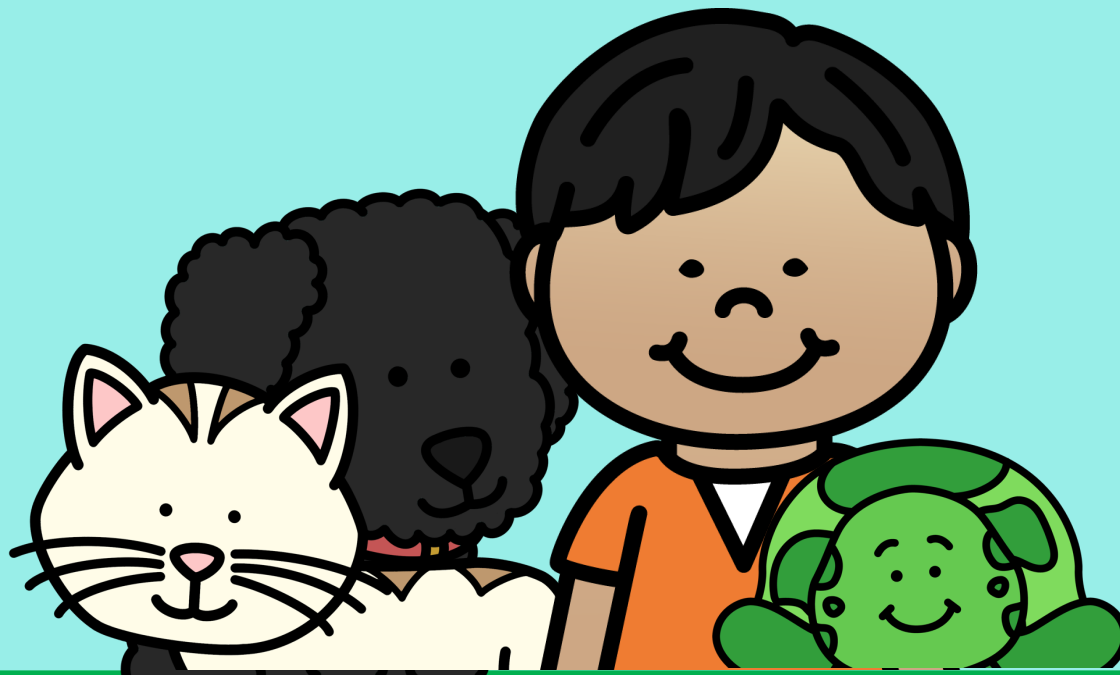


Being kind to my pets



SOCIAL STORY

©Carrie Hughes 2022, Speech and Language
Therapist

Individual use only

Resources downloaded may not be duplicated,
copied or disseminated, in part or whole.

- You may use this resource for personal
and/or classroom use only
- Please feel free to keep your own backup
copy
- If you enjoy using my resources, please let
others know about 'Carrie Hughes SLT'
- You may give this resource to parents for
homework activities and to Learning
Support Assistants in order for them to
carry out SLT recommendations

Graphics courtesy of:

<http://www.whimsyclips.com/>

Images Copyright Laura Strickland

Carriehughes.slt@gmail.com

www.carriehughes-slt.co.uk

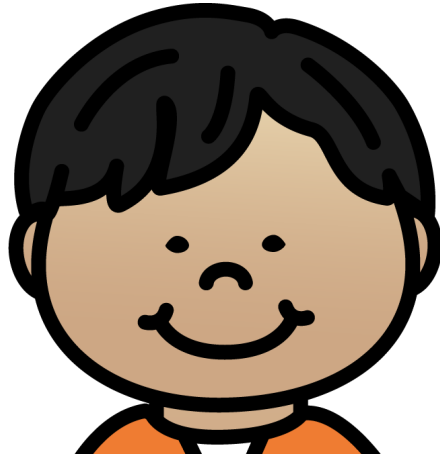
Facebook: Carrie Hughes Speech and Language
Therapist

Being kind to my pets



SOCIAL STORY

I love animals.



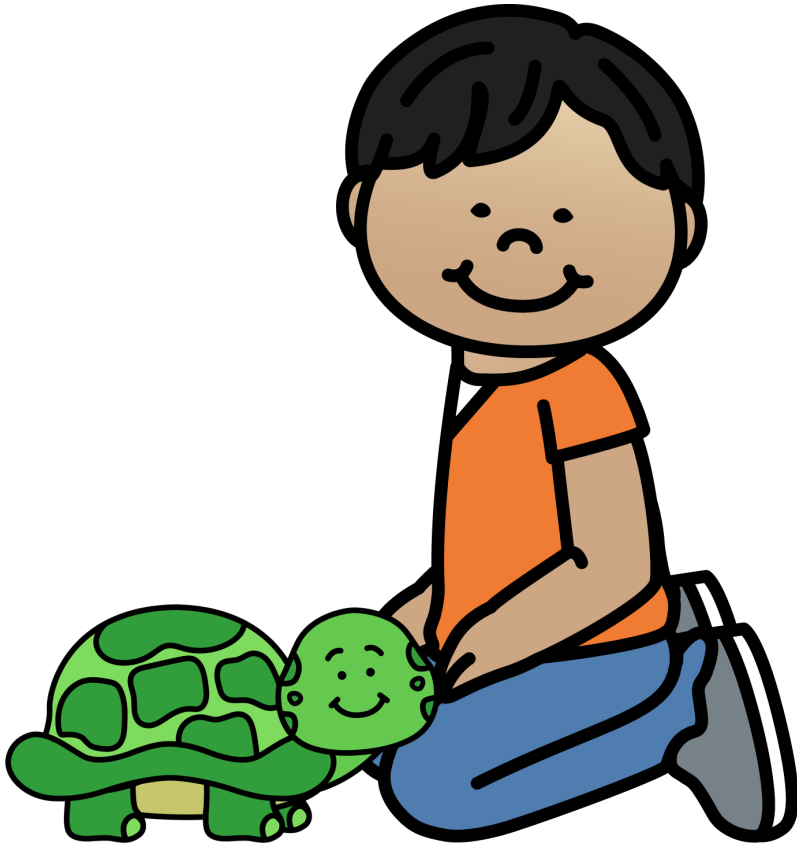
© Carrie Hughes Speech and Language Therapist

I love my pets and they love me.



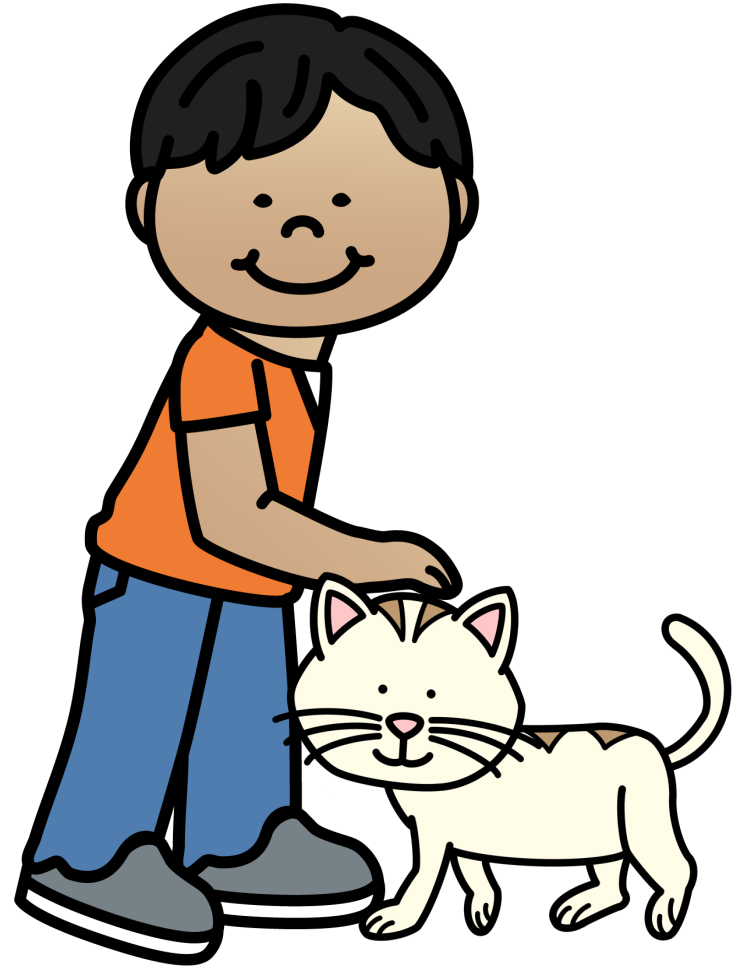
© Carrie Hughes Speech and Language Therapist

I love looking after my
pets.



© Carrie Hughes Speech and Language Therapist

I like to gently touch my
pets.



© Carrie Hughes Speech and Language Therapist

I like to feed my pets
their special food.



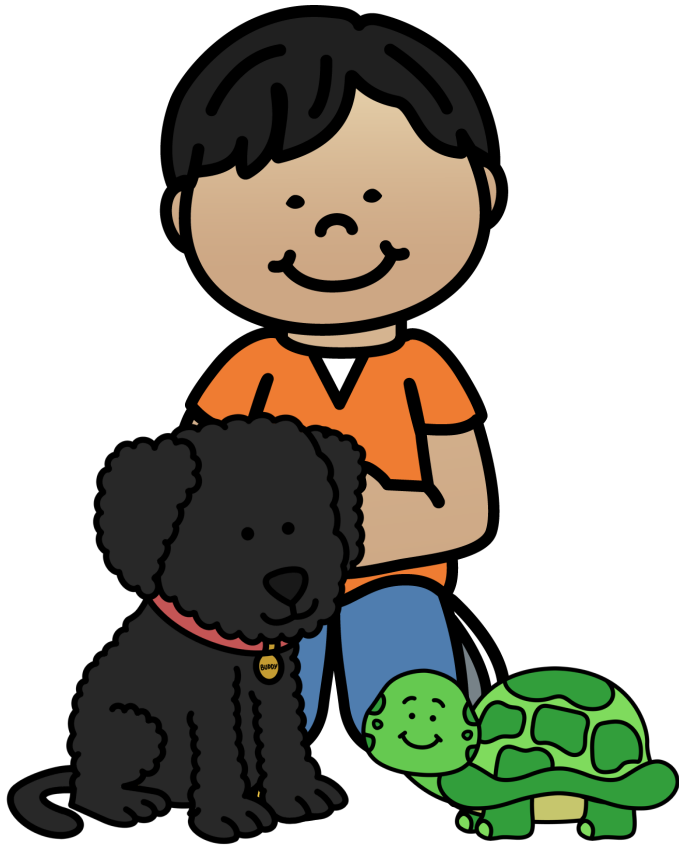
© Carrie Hughes Speech and Language Therapist

I like to play with my pets.



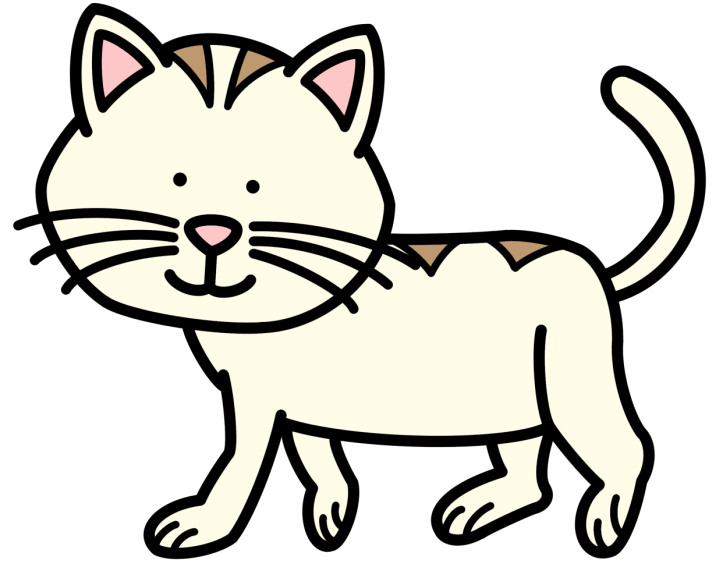
© Carrie Hughes Speech and Language Therapist

I must always be gentle
and kind to my pets.



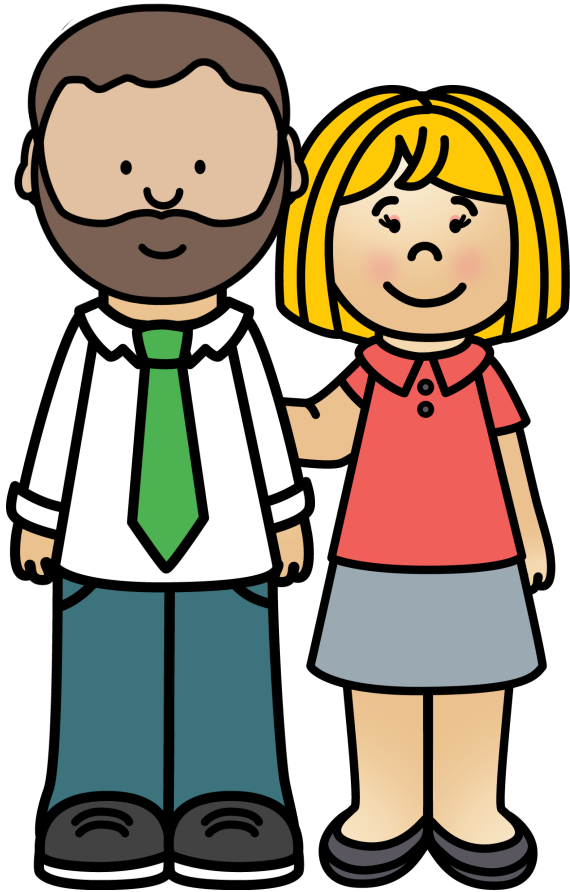
© Carrie Hughes Speech and Language Therapist

It makes my pets happy
when I am gentle and kind
to them.



© Carrie Hughes Speech and Language Therapist

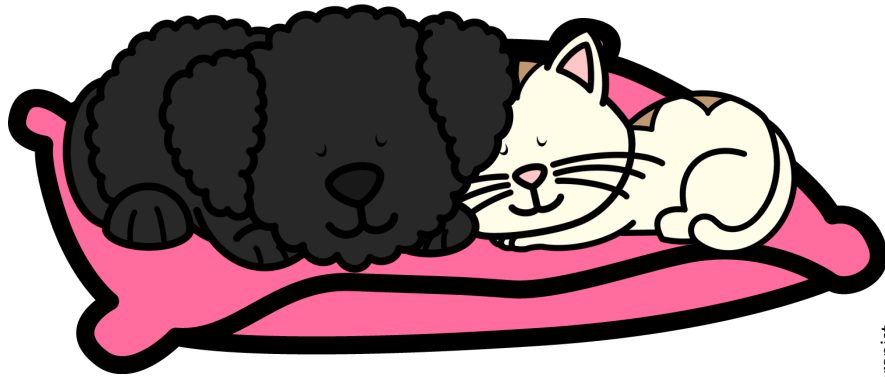
Mum and Dad will help me.
They will remind me to use
gentle hands with my pets.



Sometimes my pets need
to be on their own. This is
when I must not touch my
pets.

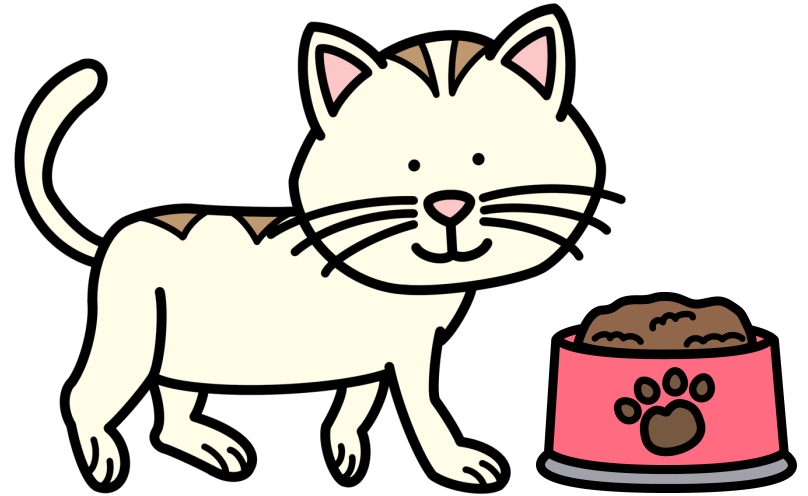


My pets need to be on their own when they are sleeping....



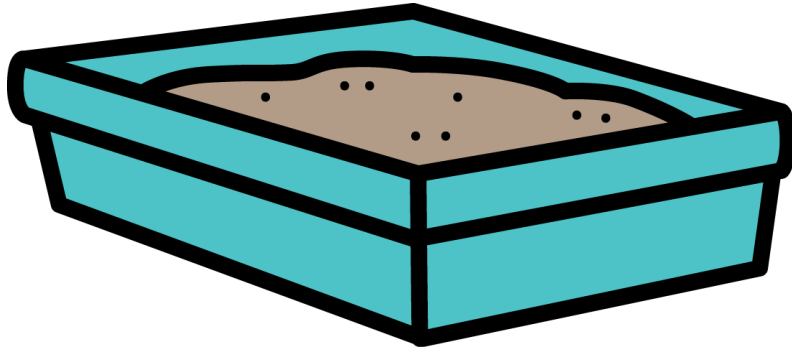
© Carrie Hughes Speech and Language Therapist

when they are eating....



© Carrie Hughes Speech and Language Therapist

And when they are going to the toilet.



© Carrie Hughes Speech and Language Therapist

I must not touch my pets when they are sleeping, eating or going to the toilet. They need to be on their own at these times.



© Carrie Hughes Speech and Language Therapist

Everyone will be very proud of me for leaving my pets on their own when they are sleeping, eating, or going to the toilet.



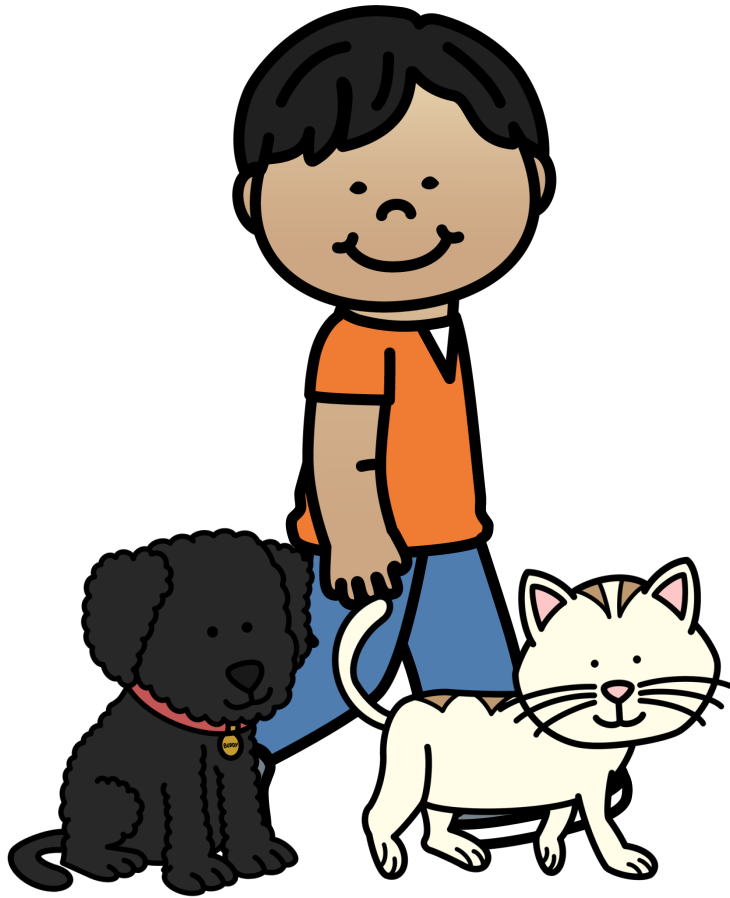
© Carrie Hughes Speech and Language Therapist

After this time on their own, my pets will be ready to play with me again.



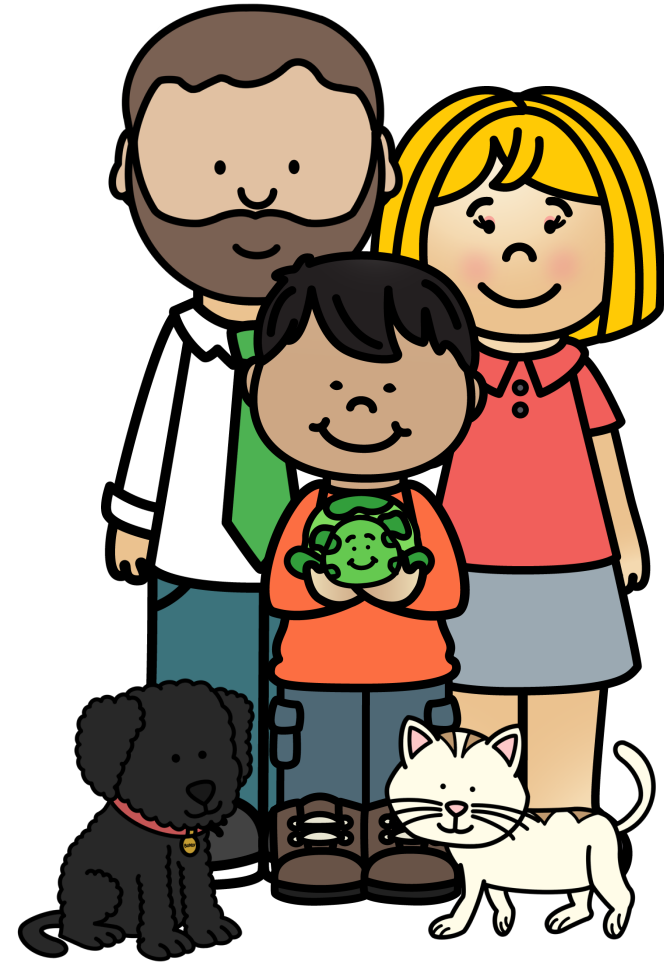
© Carrie Hughes Speech and Language Therapist

I love playing with my pets,
and they love playing with
me.



© Carrie Hughes Speech and Language Therapist

Everyone will be very
proud of me for looking
after my pets.



© Carrie Hughes Speech and Language Therapist